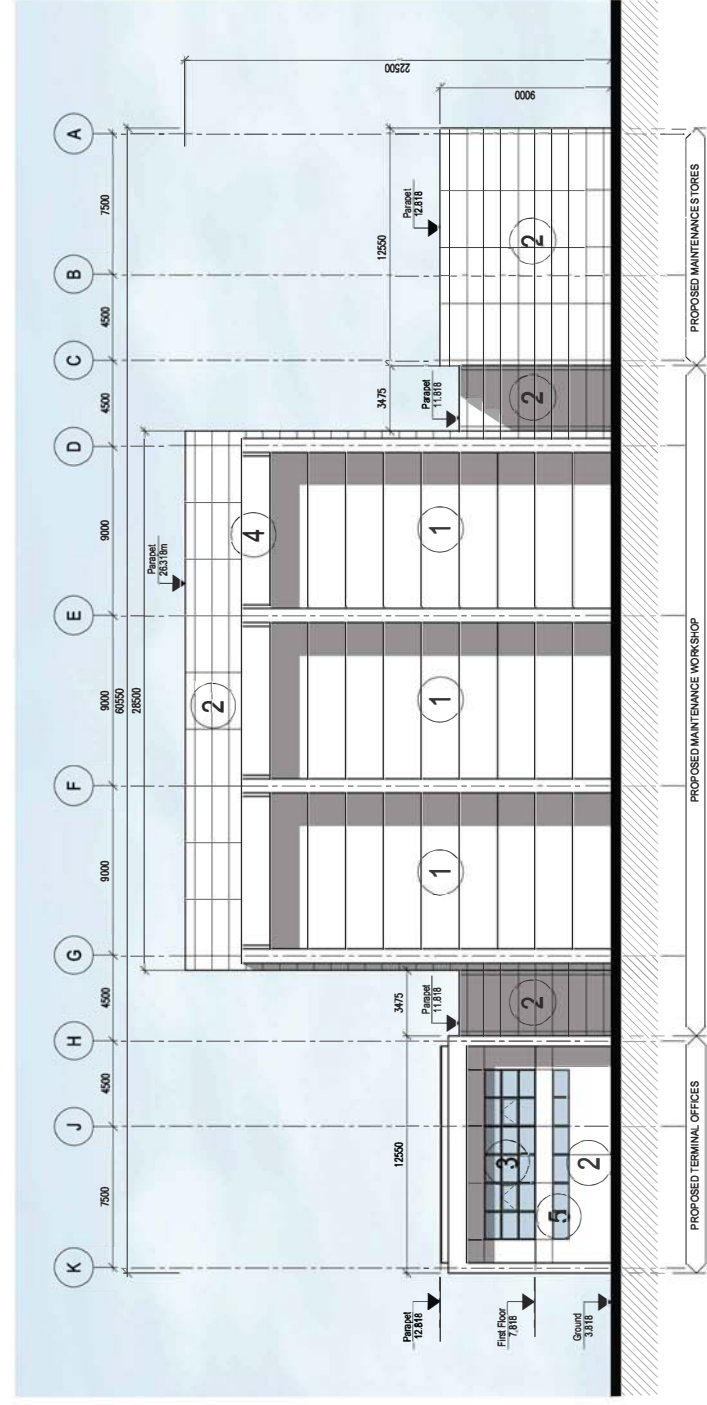
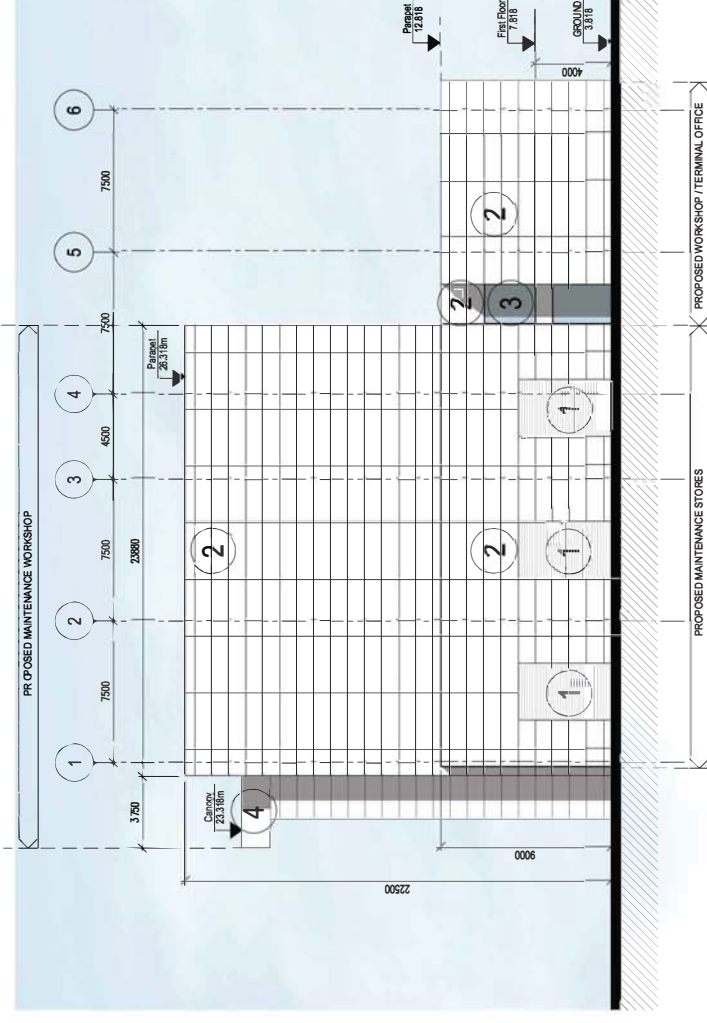


EXTERNAL FINISHES - LEGEND

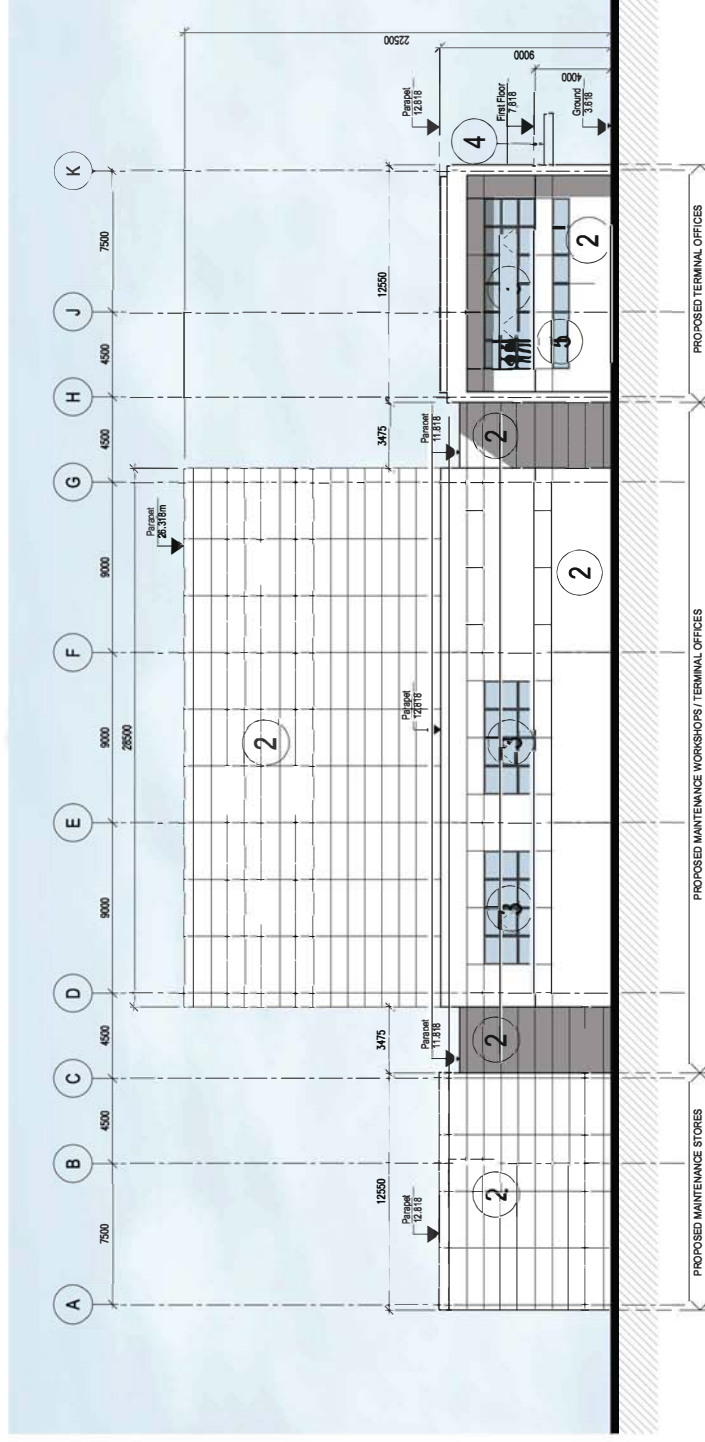
1. INDUSTRIAL ROLLER SHUTTERS
2. ALUMINUM CLADDING PANEL, RAL 9007 OR SIMILAR APPROVED
3. GLAZING
4. CANOPY CLADDED WITH POWDER COATED ALUMINUM
5. HIGH LEVEL GLAZING
6. GAZED ENTRANCE DOOR



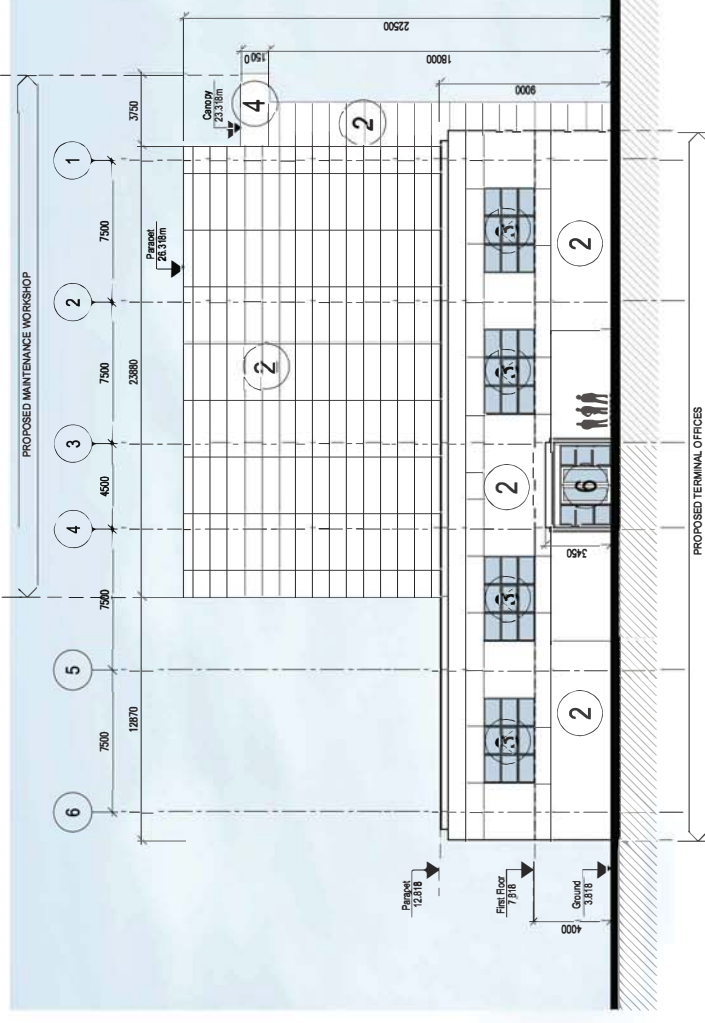
01 North Elevation
SCALE 1:200



03 East Elevation
SCALE 1:200



02 South Elevation
SCALE 1:200



04 West Elevation
SCALE 1:200

DO NOT SCALE FROM THIS DRAWING. WORK ONLY FROM FIGURED DIMENSIONS.
ALL ERRORS AND OMISSIONS TO BE REPORTED TO THE ARCHITECT.
THIS DRAWING TO BE READ IN CONJUNCTION WITH RELEVANT CONSULTANT'S DRAWINGS.

OFFICE USE:
SHEET SET: STW
STYLE TABLE: STW-General Arrangement.cxb
PLOT SCALE: 1:1
MOD. TIME: 12/13/2016 7:23:05 AM
PLOT DIME: PDF-XChange Printer 2012
PLOT TIME: 12/13/2016 7:52:25 AM
MCD. BY: John Halesky

ISSUED FOR INFORMATION	ORIG.	CHK.	DATE	ISSUE
	JH	DF	13.12.2016	P1

Scott Tallon Walker Architects Unit 30, Waterworks, Eglington Street, Cork Tel: +353-21-432014 Fax: +353-21-4861820

CLIENT: PORT OF CORK
PROJECT: RINGASKIDDY PORT REDEVELOPMENT
SITE: RINGASKIDDY PORT REDEVELOPMENT
SECTION: MAINTENANCE BUILDING
SCALE: 1:250
PROJECT ARCHITECT: DAVID FLANNERY
E-mail: mail@stwa.ie

DRAWING: ELEVATIONS
TERMINAL OFFICE AND MAINTENANCE BUILDING
SCALE: 1:250
PROJECT ARCHITECT: DAVID FLANNERY
E-mail: mail@stwa.ie

CAD REF: K:\1616001\A\A

PROJ. NO. | TYPE | PACKAGE | DWG. NO. | ISSUE
16001-SKE-00-2001 | P1

Figure 3.23 b