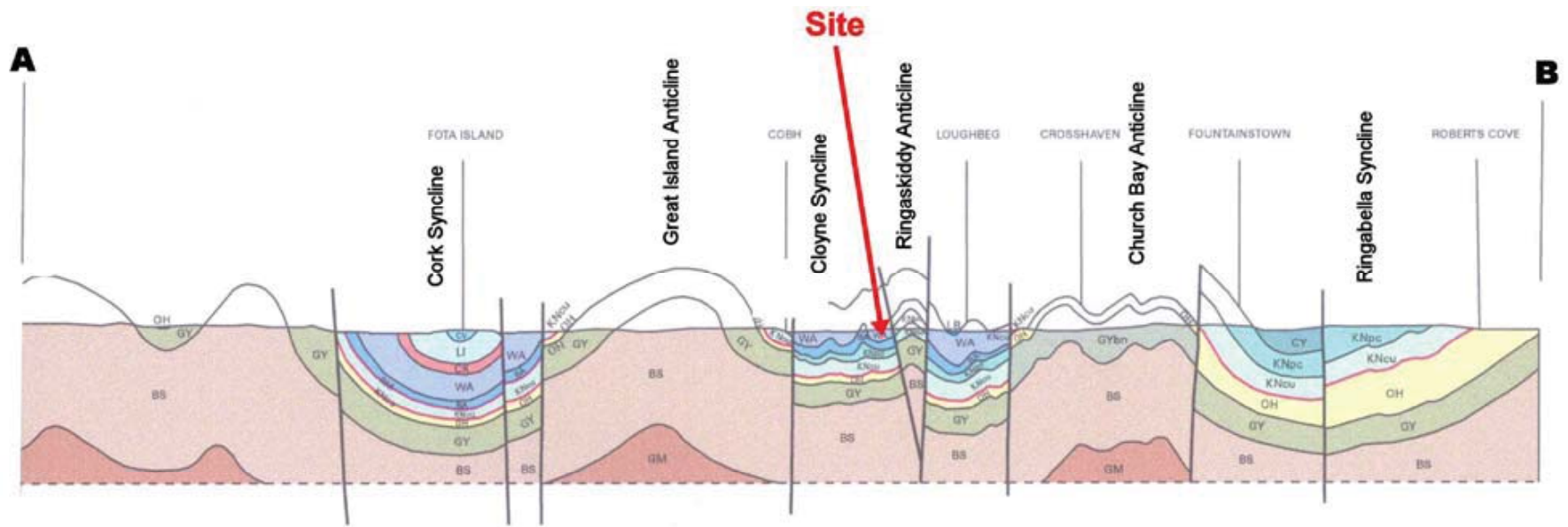


Ringaskiddy Port Redevelopment - Section 146 EIS

Geology



Elmwood House T +44 (0) 28 90 667914  
 74 Boucher Road F +44 (0) 28 90 668286  
 Belfast W [www.rpsgroup.com/ireland](http://www.rpsgroup.com/ireland)  
 BT12 6RZ E ireland@rpsgroup.com

Drawing Number

Figure 11.3

Rev

-

Project  
 Ringaskiddy Port Redevelopment - Section 146 EIS

Title  
 Geological Cross Section

Client  
 Port of Cork Company



Architect

Drawing Status

Sheet Size  
 A4

Drawing Scale  
 NTS

Project Leader  
 JMcG

Drawn By  
 J.Close

Date  
 18.11.16

Initial Review  
 JMcG